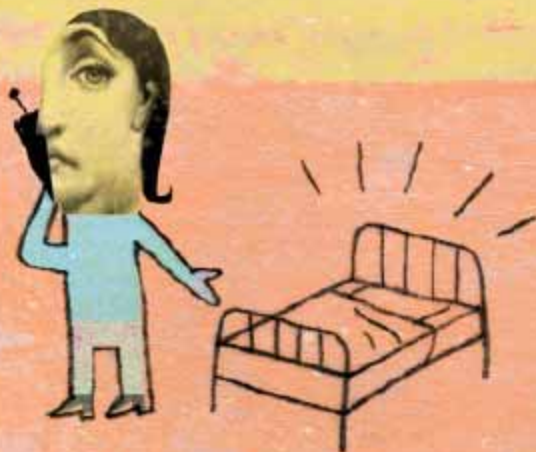
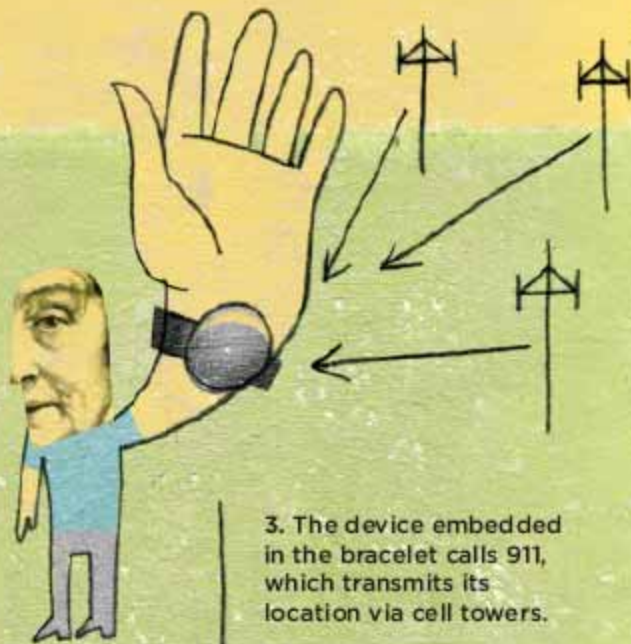


EmFinders is designing a bracelet that could help find missing Alzheimer's patients. Here's how it works:



1. The caregiver calls an operation center to report a missing person who's wearing an EmFinders bracelet



3. The device embedded in the bracelet calls 911, which transmits its location via cell towers.



2. The center verifies the person's identity and activates the bracelet remotely.



4. Police are given the location of the device.